

XFS41 CONTROL BOX

USER'S MANUAL

ZHEJIANG XIANFENG MACHINERY CO., LTD.



CE Approved



ISO9001:2000

OUTLINE

1. Important safety information	3
2. Main technical parameters	3
3. Main function.....	3
4. Connection	3
5. Adding / erase remote controls	5
6. Troubleshooting	6

1. Important safety information

Carefully read and follow all safety precaution and warnings before attempting to install and use this control box, incorrect installation can lead to severe injury.

- The control box should be installed by a qualified technician. Otherwise, serious personal injury or property damage may occur.
- After receiving the control box, you should make an unpack-inspection, in which you should check whether the product was damaged. If you have any problem please contact our sales agent.
- When opening or closing the gate, do not attempt to walk or drive through the gate.
- Do not touch the gate while it is in operation.
- Keep remote controls or button switch away from children, to prevent the gate operator from being activated involuntarily.
- The control box should be switched off before repairing it or opening its cover.
- The gate should only be operated when it can be observed to avoid accidents.
- Our company reserves the right to change the design and specification without prior notification.

2. Main technical parameters

- Power supply : $AC380 \times (1 \pm 10\%)V$ 50Hz
- Max output for motor loop: AC380V 7A
- Environment temperature: $-15^{\circ}C \sim +40^{\circ}C$

3. Main function

- Control box: 'open', 'close', 'stop' three buttons control the gate separately. The control system is fitted with wiring terminals for photocell, safety edge etc..
- Remote control: hopping code technology prevents thieves from guessing your remote code.
- Emergency stop: in an emergency, press the emergency stop button on the control box can cut off the power of control unit immediately.

4. Connection

- Locate control box: within sight of gate but away from all moving parts of the gate and at a height of more than 1.3m above the ground to avoid children reaching it.
- Connect drive unit output wires to control box in the same color. See **Control board diagram**.
- Wires within the cable shall be protected so that no damage can result from contact with any rough, sharp part. In order to protect electrical elements, waterproof adapter must be tightened by turning the big nut.
- Press the red emergency stop button on the control box can cut off the power of control unit immediately on emergent occasion. Rotate the button in arrow direction to make the button return to its original position and resume normal operation.

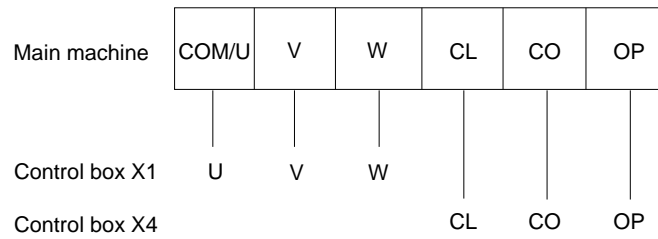


Fig.1

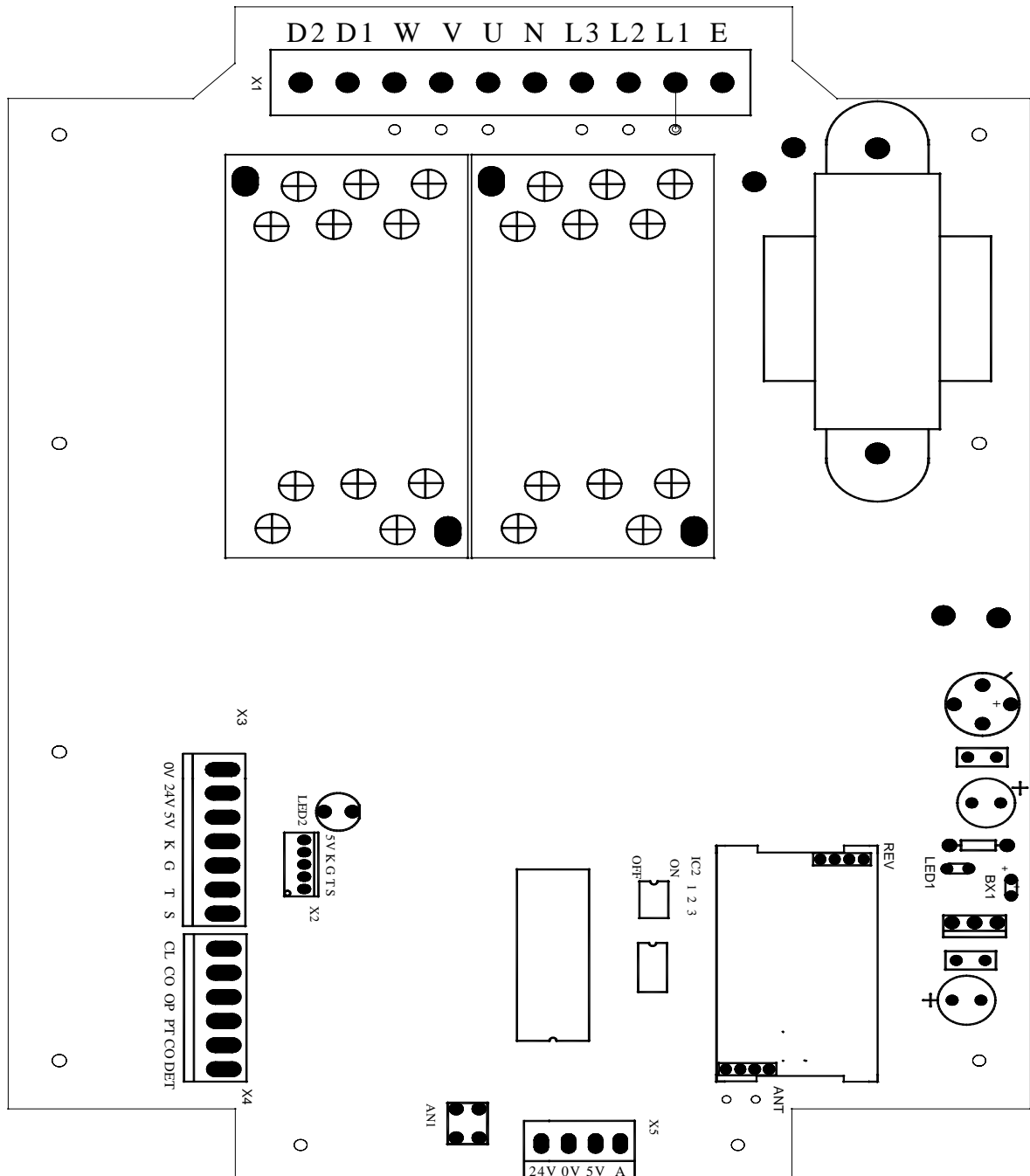


Fig.2

Wiring:

- Before carry out any wiring work, it is essential to disconnect the control box from the mains supply.
- Connect input power (380V) to 'L1', 'L2', 'L3'. Connect neutral wire to 'N', connect ground wire to 'E'. Connect motor wire to 'U', 'V', 'W'. If gate running direction is wrong, please exchange wires 'U' and 'V'. (See Fig.2 X1 terminal block)
- Connect close limit wire to 'CL', connect common wire to 'CO', connect open limit wire to 'OP'. (See Fig.2 X4 terminal block)
- Connect signal wires of photocell (NO.) to 'PT' and 'CO' and power wires to '24V' and '0V'. Connect safety edge switch wires to 'PT' and 'CO'. Connect wicket-door switch (N.C.) wires to 'DET' and 'CO', if connected, the short circuit bridge must be removed. (See Fig.2 X3, X4 terminal block)
- Connect external button switch (NO.) to 'K', 'G', 'T' and 'S'. K-open, G-close, T-stop, S-common wire. (See Fig.2 X3 terminal block)
- Note: turn the power on, if the 'LED2' is flashing, disconnect from mains supply, then reverse any two phase wires.

DIP- switch

Position	ON	OFF
1	Auto-close enable	Auto-close disable
2	Inching close (auto-close disable)	Continuous close
3	Auto-close time delay: 7 seconds Note: DIP-switch 1 must be set ON.	Auto-close time delay: 20 seconds Note: DIP-switch 1 must be set ON.

5. Adding / erase remote controls

- **Adding extra remote controls (Learn):** Press the button 'AN1' on the control board, the 'LED2' will be on and then turn off. Press any remote control button, the 'LED2' will be on and then turn off. Press the same button again, the 'LED2' will flash about 4 sec. at 1/2Hz frequency and then turn off, this indicates the learning process is finished.
- Up to 25 remote controls may be used.
- **To erase all remoter controls:** press and hold 'AN1' button which on the control board until 'LED2' turns on and then turns off automatically. This indicates that all the remote controls have been erased completely.
- **Warning: Notify the users that the gate is never to be operated unless it is in full view.**

For safety and security, we recommend that the factory setting be replaced with a personal code.

- The remote control works in three-channel mode, (button 1-open the gate, button 2-close the gate, button 3-stop the gate) See Fig.3.

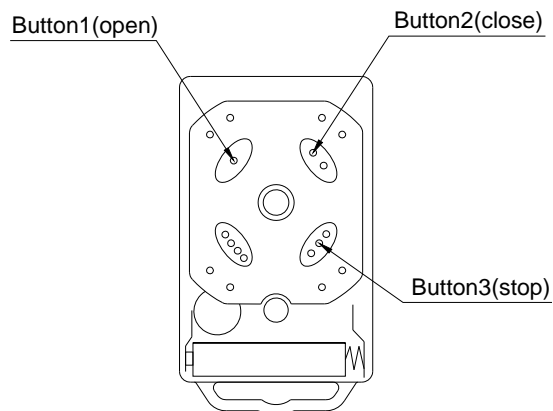


Fig.3

6. Troubleshooting

Error	Cause for error	Remedies
The operator will not work.	(1) Power is OFF. (2) The gate is obstructed. (3) The emergency stop button was pressed.	(1) Make sure that power is ON. (2) Remove obstructions. (3) Rotate the emergency stop button to ensure that the button returns to its original position.
Remote control does not work.	(1) Battery level may be low. (2) Remote control is not suitable for receiver. Wrong programming of remote control coding.	(1) Replace the battery inside the remote control. (2) After making sure the codes are correct, erase remote controls and then re-program the remote control.